

DS - Dermoid Sinus

What is Dermoid Sinus (DS)?

Dermoid Sinus is a neural tube defect that is present from birth and typically found along the dorsal midline (back, neck and tail). Affected dogs can have single or multiple Dermoid Sinuses.

What are the symptoms?

- A black dot, or hole in the skin, which may have protruding hair.
- A tube or cord can be felt beneath this hole which, when manipulated, can cause an indentation in the skin above.

How is it diagnosed?

- It is advisable that breeders ensure all puppies are physically and visually examined by at least 2 competent persons i.e., breeders or Veterinarians with knowledge of Dermoid Sinus and its detection.
- Myelography (X-ray with contrast injected), MRI or CT scans may also be performed to confirm type/ depth.

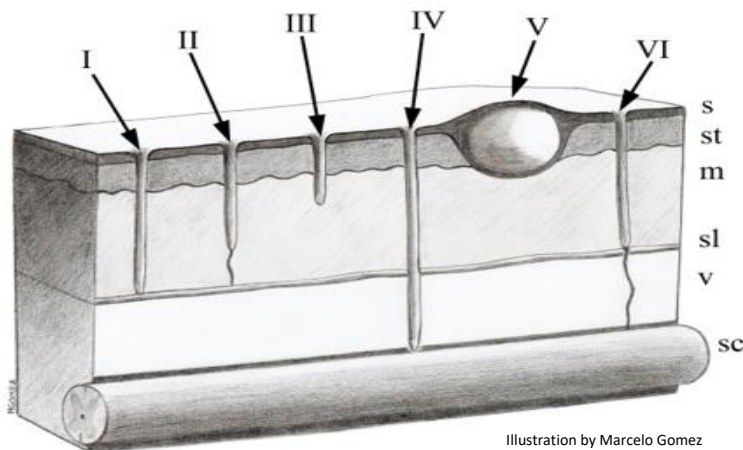


Illustration by Marcelo Gomez



Treatment and Prognosis

- Surgical extraction by an experienced veterinary surgeon, via a small incision, is the only remedy. This procedure is in the majority of cases very successful and after a short recovery the puppy will have no further complications.
- Sadly, if the sinus is attached to the spinal cord, removal may not be possible.
- If left untreated, the sinus can become infected, causing pain and discomfort. If the sinus connects to the spinal cord it can be associated with neurological abnormalities.